

# LAKER



## A-joint Dining Table 2700

Product Data Sheet

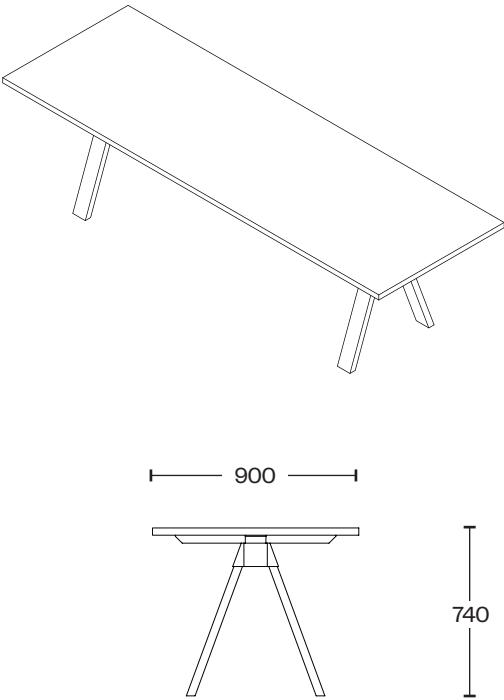
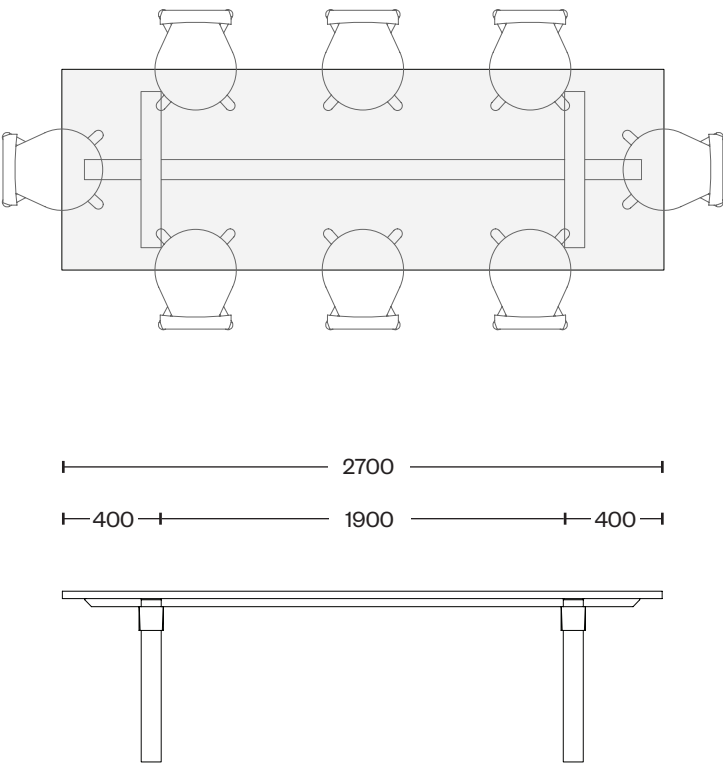
## A-joint Dining Table 2700

LKR-AJR-A-TBL-2700-A  
LKR-AJR-B-TBL-2700-A  
LKR-AJR-A-TBL-2700-O  
LKR-AJR-B-TBL-2700-O  
LKR-AJR-A-TBL-2700-W  
LKR-AJR-B-TBL-2700-W

### Description

A-joint Dining table perfect for larger space, both residential and commercial. Manufactured in solid timber and utilising the original A-joint Regular.

Length	2700mm
Width	900mm
Height	740mm
Leg Inset	400mm



### Construction

A-joint Dining Table tops, frames and legs are manufactured from solid timbers. A-joints are sand cast and rumble polished.

### Sealant

10% gloss polyurethane sealant to the timber.

### Country of Origin

Australia

### Production Lead Time

Made-to-order production lead time is 6-8 weeks.

### Care Guide

Timbers are susceptible to extreme changes in temperature & humidity. Please refer to detailed timber care guide.

### Warranty

12 months on timber commercial product. 36 months on timber residential product. Joints 10 years commercial and residential. Please refer to detailed warranty document.

### Top & Frame Materials



American Walnut



American Oak

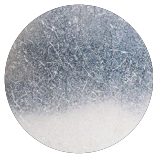


Victorian Ash  
(Australian)

### A-joint Materials



Bronze



Aluminium

---

**LAKER**

Distribution by

**living  
edge®**

For enquiries, please contact

info@livingedge.com.au  
1300132154

info@laker.studio  
(02) 9199 9658

---

**www.laker.studio**  
**laker.studio**

©Laker 2022. All rights reserved.